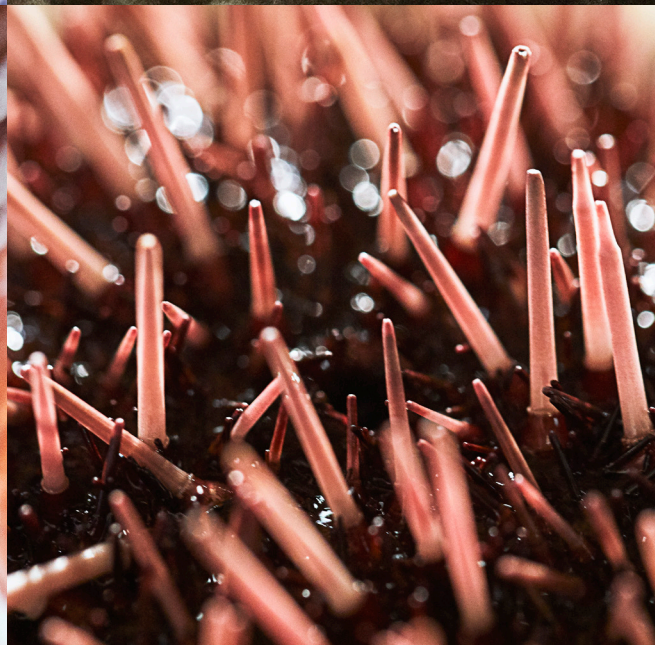
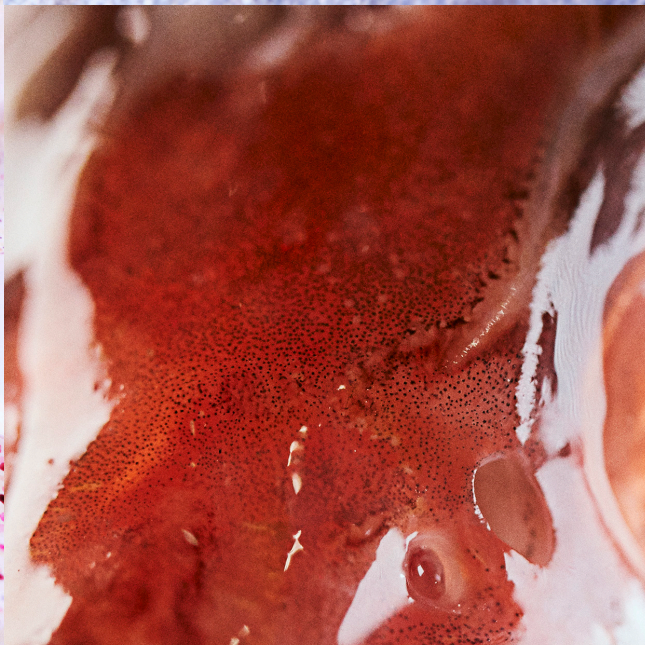
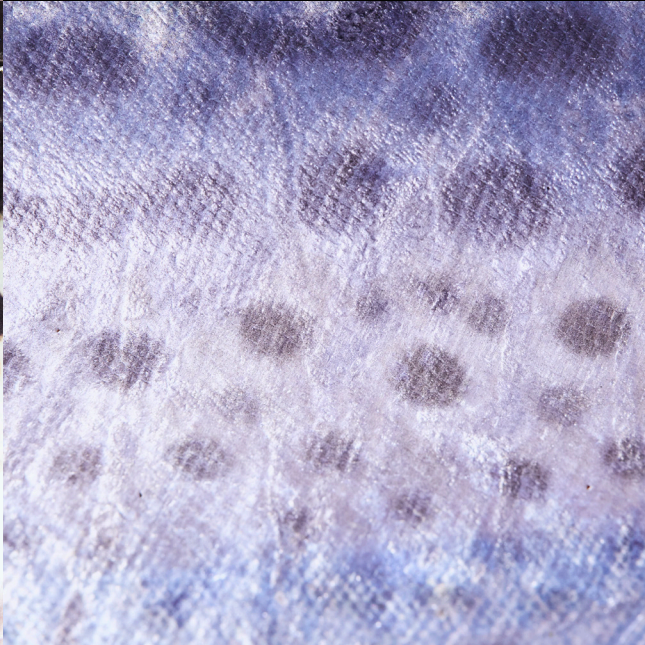
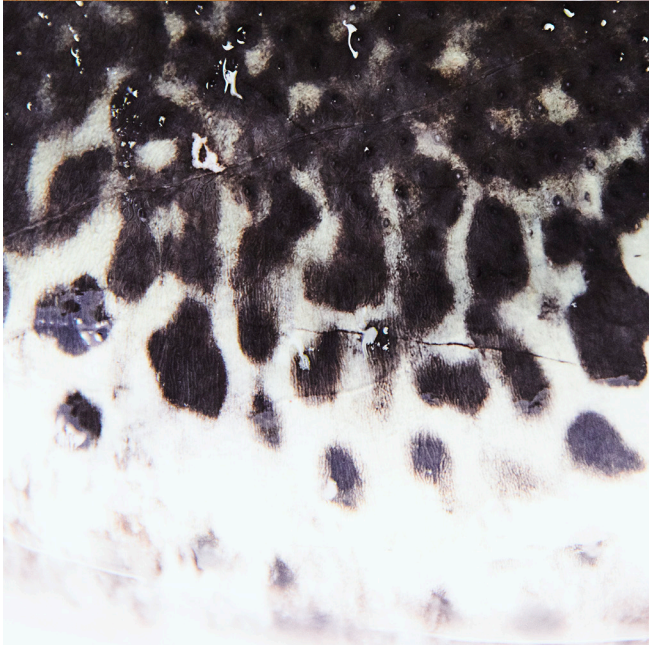


Fisherman's Wharf
SHIMONOSEKI

QUESTION

これが何か分かりますか？

Can you guess what these are?



3つの海がもたらす魚たちの楽園 日本屈指の好漁場・下関へ

A paradise full of fish brought by
three different seas.

Shimonoseki, one of the best
fishing grounds in Japan.

2

Shimonoseki

An aerial photograph of the Shimonoseki harbor in Japan, showing the city, the bay, and a large suspension bridge in the foreground. A map of Japan is overlaid on the image, with a red dot indicating the location of Shimonoseki on the coast of Honshu. The text 'Shimonoseki' is written next to the red dot. The number '2' is visible in the lower-left corner of the image.

福岡県に隣接する山口県下関市は本州の西の端に位置し、日本海、瀬戸内海、関門海峡の3つの海に囲まれた街です。地形も海流も水温も異なる3つの海が、ここ下関には集います。それが意味するのは、多彩な漁場があり、多種多様な海の恵みをもたらされること。もちろん下関の代名詞である「ふぐ」も有名ですが、ほかにも無数に日本屈指の水揚げ量を誇る魚があるのです。

そしてもうひとつ。この豊かな海は豊富な魚と同時に、漁師も育てました。底引き網、まき網、敷網、延縄……。多彩な魚種に合わせて考え抜かれた、多彩な漁法。黙々と海と向き合う漁師たちの思いは、そのまま魚の質に表れます。だからこそ、下関の魚は信頼のブランドとして注目を集めているのでしょう。

類まれなる豊かな海と、熱き漁師たちに育まれる街・下関。そのポテンシャルに迫ります。

Given its location at the western end of Honshu (the mainland of Japan), Shimonoseki, the largest city in Yamaguchi Prefecture, lies next to Fukuoka Prefecture and has prospered as a gateway to Eurasia as well as a strategic stop for land and maritime transport in the area.

Boasting attractive scenery along the Kanmon Straits, the city witnessed so many important events in Japanese history. There are also many sights and places of historical and cultural interest in the city, such as ancient samurai residences and clay walls.

The Sea of Japan, Seto Inland Sea, and Kanmon Straits. These are the three different seas with varying topographies, oceanic currents, and water temperatures, that gathers here in Shimonoseki. These differences mean that a great diversity of fishing grounds and blessings from the sea can all be found within arm's reach. Shimonoseki is of course known

as the "Fugu Capital", since it is the major accumulation area for *fugu*, the Japanese puffer fish. But this area also brings in large catches of countless other fish.

There's one more thing to note. These rich waters have raised not only abundant amount of fish, but also many fishermen. A variety of fishing methods have been carefully thought out to catch various species of fish, including bottom trawling nets, purse seine nets, lift nets, and longlines. The thoughts and feelings of those fishermen who stoically face the seas are reflected in the quality of the fish. That is why Shimonoseki fish are attracting people's attention as a trusted brand.

Shimonoseki, a city with exceptionally rich waters and passionate fishermen. It is time to unveil its full potential.