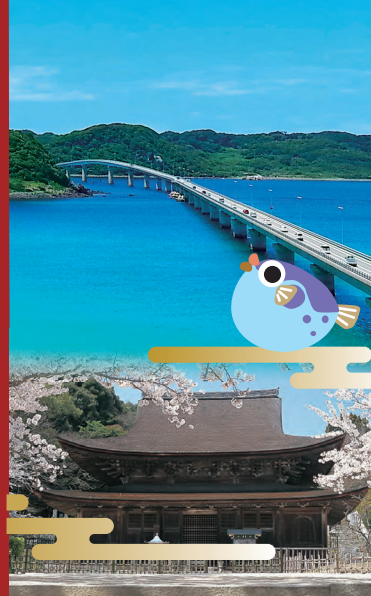
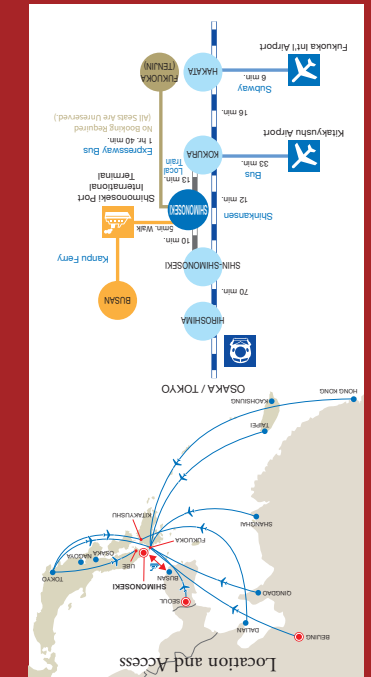


SHIMONOSEKI SIGHTSEEING GUIDE

Welcome to Shimonoseki



TEL: 083-231-1350 FAX: 083-231-1353
<https://shimonoseki.travel/english/index.html>



Events & Festivals



5 May The Shimonoseki Strait Festival
 This festival held every year on May 3rd and 4th is based on an actual historical event that took place in the Kannon Strait. The festival reenacts various historical events associated with Shimonoseki. These include the "Parade of court ladies of the Sentei (Former Emperor) Festival", the sea parade and the "Samurai Parade", which are all depicting important events during and after the war.



Tour de Shimonoseki
 This cycling event is appealing for its scenic course which takes cyclists through the coastline and leafy roads.



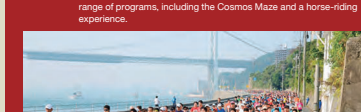
8 August The Strait fireworks
 A splendid fireworks display is staged by shooting around 15,000 fireworks into the night sky from both banks of the Kannon Strait on August 13th every year. The sea reflects the mesmerizing fireworks to form a unforgettable scene. (The event is still held on a rainy day but is cancelled if there is severe weather.)



Shimonoseki Bakan Festival
 When: Saturday & Sunday in late August
 Place: From Shimonoseki Station to Karato area
 The summer's largest festival bustles with many staged events and open-air stalls. There is an air of excitement on the final day during the festival's highlight, the "Heiko Dance", in which about 4,000 city residents participate.



10 October Toyoura Cosmos Festival
 When: Early to Mid October
 Place: Refresh Park Toyoura
 This festival is held while a million cosmos flowers bloom. It offers a range of programs, including the Cosmos Maze and a horse-riding experience.

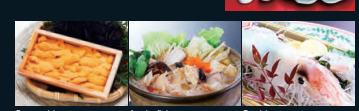


11 November Shimonoseki Kaikyo Marathon
 A very popular marathon event in Japan which takes participants along the Kannon Strait.

The food of Shimonoseki



Fugu (blowfish)
 Shimonoseki boasts the largest blowfish handling in Japan. Throughout the year, you can enjoy a variety of fugu dishes in the city's restaurants, including sashimi, hotpot, karage, sushi, soups, rice porridge, rice topped with fugu, and hot sake flavored with fugu fins.



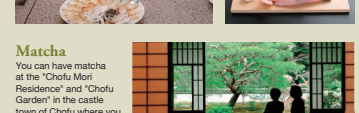
Tonchan Nabe
 Shimonoseki's regional nabe is a hotpot of offal and vegetables cooked in a sauce made of authentic Korean spices.



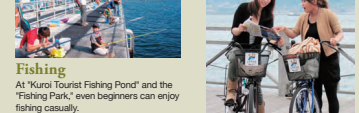
Soft-serve ice cream
 You can enjoy soft-serve ice cream in a variety of flavors, including pear, strawberry, wakame seaweed, tomato, and sea urchin at tourist facilities and roadside stations in the city.



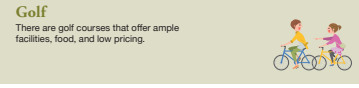
Kawara soba
 This unique dish from Shimonoseki can be enjoyed mainly in the Kawatana Onsen district. Soba noodles made with matcha aromatically prepared on a searing hot roof tile are enjoyed with beef, egg ribbons and green onions dipped in steaming hot dashi.



Fugu (blowfish) cooking experience
 At "Fuku Rakusha" near Japan's top fugu market "Handomari", you can prepare fugu under the supervision of a professional chef and eat it on the spot. (Neutralized fugu is used.)



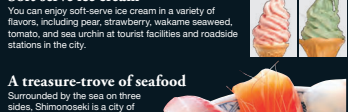
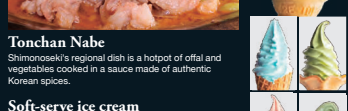
Fruit picking
 Places: Toyoura-cho, Toyota-cho, Hohoku-cho, etc.
 You can pick and eat seasonal fruits such as mandarin oranges, apples, grapes, and strawberries, as well as the local specialty pears. Availability: pears & grapes (Sep.) mandarin oranges (mid Oct. to early Dec.) apples (late Aug. to late Nov.) strawberries (mid Apr. to early May)



Onsen (hot springs)
 The city is dotted with hot spring towns which have been enjoyed since old times. Hot springs with spectacular sea views, and those in the mountains.



Karato Market
 Located along the Kannon Strait, the fish market attracts ordinary citizens as well as those in the food service industry. It is very popular on Fridays, Saturdays, Sundays, and holidays when food stalls offering sushi, seafood bowls and deep fried dishes prepared with fresh seafood open for business.



A treasure-trove of seafood
 Surrounded by the sea on three sides, Shimonoseki is a city of marine products blessed with an abundant fishing ground and fishing port.



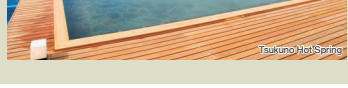
Soba/tofu-making experience
 You can get a taste of making soba and tofu at Toyota Agricultural Park "Minori no Oka".



Matcha
 You can have matcha at the "Chofu Mori Residences" and "Chofu Garden" in the castle town of Chofu where you can sense the ambience of Japan.



Fishing
 At "Kuroi Tourist Fishing Pond" and the "Fishing Park", even beginners can enjoy fishing casually.



Bicycle rental
 There are bicycle rental services for tourists to enjoy.

Golf
 There are golf courses that offer ample facilities, food, and low pricing.

Tsunoshima Island

This island offers spectacular views of the cobalt-blue sea and white sands. The sunset and the stars at night are also gorgeous. Part of the island is in Kita-Nagato Kagan Quasi-National Park, and the Tsunoshima Island Bridge (1,760 meters long) which links the island with the mainland has become a famous film and TV commercial location since it opened in 2000. (Traveling to Tsunoshima Island)
 70 min. drive from Shimonoseki I.C. (expressway entrance / exit) or 30 min. by bus from JR Takabe Station to "Hotel Nishi-Nagato Resort Iriguchi" and 3 min. walk.



Castle Town Chofu Area
 Ruins of the Katsuyama residence
 Chofu Garden
 Shimonoseki City Art Museum

Kitayushu City
 Kyushu Expressway
 Kitayushu I.C.

Surrounding Areas
 Suonada Sea
 Hibikinada Sea
 Around Shimonoseki Station
 Karato Area
 Chofu Area
 Kitayushu City

Around Shimonoseki Station

The area around Shimonoseki Station is the center of Shimonoseki. There is an observatory tower that commands panoramic views of the city, the Green Mall where people can feel Shimonoseki's history with Korea, and many stores and restaurants. It is about a 5-minute walk from Shimonoseki Station to the international ferry terminal. The terminal is connected to Busan, Korea. Shimonoseki Station is connected to anywhere in Japan, such as Kyushu in the south and Tokyo in the east. You can get on the Shinkansen (bullet train) from Shin-Shimonoseki Station, which is located 20 stations away from Shimonoseki Station.

Accommodations

- 1 Ryokan Sumire Tel.083-222-3191
- 2 Prince Hotel Shimonoseki Tel.083-232-2301
- 3 Hotel Wing International Tel.083-235-2111
- 4 Shimonoseki Station Hotel Tel.083-231-2225
- 5 VIA INN Shimonoseki Tel.083-222-6111
- 6 Shimonoseki-Eki Nishi Washington Hotel Plaza Tel.083-261-0410
- 7 Smile Hotel Shimonoseki Tel.083-233-0111
- 8 Green Hotel Shimonoseki Tel.083-231-1007
- 9 Ryokan Tenkai Tel.083-222-3676
- 10 Dormy INN Premium Shimonoseki Tel.083-223-5499
- 11 Tokyo INN Shimonoseki Kaikyō-yume-tower Mae Tel.083-234-1045
- 12 Yufuku Ryokan Tel.083-231-0029
- 13 Plaza Hotel Shimonoseki Tel.083-233-3333
- 14 Business Hotel VIP Nangoku Tel.083-232-0001

Restaurants

- 15 Kinraku Ryokan Tel.083-222-0017
- 16 Kiraku Ryokan Tel.083-222-3037
- 17 Karato Central Hotel Tel.083-231-5235
- 18 Tokyo Daiichi Hotel Shimonoseki Tel.083-223-7111
- 19 Shimonoseki Grand Hotel Tel.083-231-5000
- 20 Ryokan Shunpanro Tel.083-223-7181
- 21 uzuhouse Tel.083-250-9787
- 22 Ryokan Hatagoya Danoura PA Branch Tel.083-222-8898
- 23 Ryokan Minamisogawa-bekkan Tel.083-222-3357
- 24 Ryokan Gempeto Tel.083-235-8888
- 25 Shimonoseki Hinoyama Youth Hostel Tel.083-222-3753
- 26 National Hotel Kaikyō View Shimonoseki Tel.083-229-0117
- 27 Manjuso Tel.083-222-1126
- 28 Hotel Kaze-no-umi Tel.083-241-1180
- 29 Ryokan Kogushiya Tel.083-245-0001

Other Services

- 1 Accommodation
- 2 Coin Locker
- 3 Restroom
- 4 Special Needs Restroom
- 5 Convenience Store
- 6 100-yen Shop
- 7 Tourist Information
- 8 Bank
- 9 Post Office
- 10 Drug Store
- 11 Public Phone
- 12 Parking Lot
- 13 Bus Stop
- 14 Car Rental

Sea Mall Shimonoseki

2 mins. walk from Shimonoseki Station
International shopping center (Specialty shops, Department Store Daimaru). The mall offers restaurants, fashion stores, beauty stores and a V100 Store. You can also find commemorative gifts of Shimonoseki city and Yamaguchi prefecture.

Kaikyō Yume Tower

17 mins. walk from Shimonoseki Station
The Tower is 153m, one of the tallest in western Japan. The view of the Kammon Strait from the top of this Tower is splendid. On the observatory floor, there is also a coffee shop. Admission fee: Adult ¥1000, Children (elementary/junior high school) ¥500 (AM9:30 to PM10:30). There is a 50% discount for foreigners who bring their passports.

Green Mall

2 mins. walk from Shimonoseki Station
Green Mall, which is located 200 m north of Shimonoseki Station, has many vendors that handle Korean food and specialty products. You can enjoy shopping in a homey atmosphere. There are some tax-free stores on the street.

Shimonoseki Port International Terminal

This is the entrance to the international port city, Shimonoseki, where ferries to and from Busan arrive and depart. There is a ferry once a day to Busan.

Accommodations

Shimonoseki Accommodation Association 083-222-0756

Carato Area

- 19 Kinraku Ryokan Tel.083-222-0017
- 20 Kiraku Ryokan Tel.083-222-3037
- 21 Karato Central Hotel Tel.083-231-5235
- 22 Ryokan Shunpanro Tel.083-223-7181
- 23 uzuhouse Tel.083-250-9787
- 24 Ryokan Hatagoya Danoura PA Branch Tel.083-222-8898
- 25 Ryokan Minamisogawa-bekkan Tel.083-222-3357
- 26 Ryokan Gempeto Tel.083-235-8888
- 27 Shimonoseki Hinoyama Youth Hostel Tel.083-222-3753
- 28 National Hotel Kaikyō View Shimonoseki Tel.083-229-0117
- 29 Manjuso Tel.083-222-1126
- 30 Hotel Kaze-no-umi Tel.083-241-1180
- 31 Ryokan Kogushiya Tel.083-245-0001

How to get on a train (JR Shinkansen, local line)

There are automatic ticket machines at the station. Please buy a ticket to your destination and get on the train. If you are using a Shinkansen or rapid express train, please purchase the ticket at the "ticketing office" in the station.

Karato Area

This area is famous for delicious foods using fresh seafood from the Karato market. The waterfront developed a long time ago as people and goods travelled into and out of Karato Pier. This is still a very popular sightseeing location with many restaurants and stores. It takes about 10 minutes by bus or 30 minutes on foot to travel from Shimonoseki Station to the Karato Area.

The fact between the Goryeo and Heike clans in 1185 radically changed the course of Japanese history. The Goryeo navy and Heike, and the Goryeo navy and Heike in Shimonoseki after having conducted a sea battle through the Karato Strait. The Goryeo navy and Heike in Shimonoseki after having conducted a sea battle through the Karato Strait. The Goryeo navy and Heike in Shimonoseki after having conducted a sea battle through the Karato Strait.

The whole blood of the Kammon Strait, which has been the whole blood of the Kammon Strait, is still a very popular sightseeing location with many restaurants and stores. It takes about 10 minutes by bus or 30 minutes on foot to travel from Shimonoseki Station to the Karato Area.

Accommodations

- 1 Ryokan Sumire Tel.083-222-3191
- 2 Prince Hotel Shimonoseki Tel.083-232-2301
- 3 Hotel Wing International Tel.083-235-2111
- 4 Shimonoseki Station Hotel Tel.083-231-2225
- 5 VIA INN Shimonoseki Tel.083-222-6111
- 6 Shimonoseki-Eki Nishi Washington Hotel Plaza Tel.083-261-0410
- 7 Smile Hotel Shimonoseki Tel.083-233-0111
- 8 Green Hotel Shimonoseki Tel.083-231-1007
- 9 Ryokan Tenkai Tel.083-222-3676
- 10 Dormy INN Premium Shimonoseki Tel.083-223-5499
- 11 Tokyo INN Shimonoseki Kaikyō-yume-tower Mae Tel.083-234-1045
- 12 Yufuku Ryokan Tel.083-231-0029
- 13 Plaza Hotel Shimonoseki Tel.083-233-3333
- 14 Business Hotel VIP Nangoku Tel.083-232-0001

Haikara Yokocho

10 mins. bus ride from Shimonoseki Sta. to Kaikyō Yume Tower and 2 min. walk
Haikara Yokocho is an amusement park with a 60 meter high Ferris wheel.

Shimonoseki Marine Science Museum "Kaikyō-kan"

10 mins. bus ride from Shimonoseki Sta. to Kaikyō Yume Tower and 2 min. walk
This place offers a lot to see, including a water tank that can replicate the local current of the Kammon Strait, an "ocean tunnel" in the water tank that people can walk through, and exhibitions of many blowfish from around the world. You can also enjoy dolphin and sea lion shows. In the Penguin Aquarium, which contains the world's largest swimming pool (water volume 700 and water depth 6 m), live about 140 pretty penguins (8 types). In the "Temperate zone", you can have a close view of their nests. In the "Subarctic zone", you can enjoy watching the penguins swim. They swim majestically as if you were flying.

Karato Market

7 mins. bus ride from Shimonoseki Sta. to Karato and 2 min. walk
You will enjoy shopping, centered around fresh fish, which you can only experience in a fishery city like Shimonoseki. On Fridays, Saturdays, Sundays, and national holidays, a temporary gourmet market is held and is very popular with tourists. The top floor is filled with a grassy lawn. You can relax there while watching the view of the Kammon Strait.

Former British Consulate in Shimonoseki

7 mins. bus ride from Shimonoseki Sta. to Karato and 2 min. walk
This shrine is dedicated to Emperor Antoku, who drowned after his defeat in a battle that divided Japan in half about 830 years ago. It is characterized by the red color of the Sullowman Gate. The Sullowman is May is well known as a gorgeous and spectacular festival.

How to get on a bus

You pay the bus fare when you get off. First check the route and the schedule. When you get on the bus, please buy a ticket from the orange-colored ticketing device which is located either on the left or right side of the bus entrance, depending on the type of bus. The fare is based on the distance traveled and is displayed together with the ticket numbers on the screen mounted on the upper left side of the driver's seat. When you get off, please check your fare price on the screen and insert the fee with the numbered ticket into the fare box you leave.

Shimonoseki Station Loading Zone

Shimonoseki Station Loading Zone

- 1 to Chofu, Chofu
- 2 to Chofu, Chofu
- 3 to Chofu, Chofu
- 4 to Chofu, Chofu
- 5 to Chofu, Chofu
- 6 to Chofu, Chofu
- 7 to Chofu, Chofu
- 8 to Chofu, Chofu
- 9 to Chofu, Chofu
- 10 to Chofu, Chofu
- 11 to Chofu, Chofu
- 12 to Chofu, Chofu
- 13 to Chofu, Chofu
- 14 to Chofu, Chofu
- 15 to Chofu, Chofu
- 16 to Chofu, Chofu
- 17 to Chofu, Chofu
- 18 to Chofu, Chofu
- 19 to Chofu, Chofu
- 20 to Chofu, Chofu
- 21 to Chofu, Chofu
- 22 to Chofu, Chofu
- 23 to Chofu, Chofu
- 24 to Chofu, Chofu
- 25 to Chofu, Chofu
- 26 to Chofu, Chofu
- 27 to Chofu, Chofu
- 28 to Chofu, Chofu
- 29 to Chofu, Chofu
- 30 to Chofu, Chofu
- 31 to Chofu, Chofu
- 32 to Chofu, Chofu
- 33 to Chofu, Chofu
- 34 to Chofu, Chofu
- 35 to Chofu, Chofu
- 36 to Chofu, Chofu
- 37 to Chofu, Chofu
- 38 to Chofu, Chofu
- 39 to Chofu, Chofu
- 40 to Chofu, Chofu
- 41 to Chofu, Chofu
- 42 to Chofu, Chofu
- 43 to Chofu, Chofu
- 44 to Chofu, Chofu
- 45 to Chofu, Chofu
- 46 to Chofu, Chofu
- 47 to Chofu, Chofu
- 48 to Chofu, Chofu
- 49 to Chofu, Chofu
- 50 to Chofu, Chofu

Castle town, Chofu

By the 7th century a feudal government had already been formed in Chofu. It is a historic town with many old stories stretching back thousands of years. We recommend strolling around the town, enjoying the cherry blossoms in the spring and changing leaves in the fall. It is a 23-minute bus ride from Shimonoseki Station. Be sure to get off the bus at the "Jokamachi (Castle town) Chofu" stop.

Chofu is a historic town with many old stories stretching back thousands of years. We recommend strolling around the town, enjoying the cherry blossoms in the spring and changing leaves in the fall. It is a 23-minute bus ride from Shimonoseki Station. Be sure to get off the bus at the "Jokamachi (Castle town) Chofu" stop.

Accommodations

- 1 Ryokan Sumire Tel.083-222-3191
- 2 Prince Hotel Shimonoseki Tel.083-232-2301
- 3 Hotel Wing International Tel.083-235-2111
- 4 Shimonoseki Station Hotel Tel.083-231-2225
- 5 VIA INN Shimonoseki Tel.083-222-6111
- 6 Shimonoseki-Eki Nishi Washington Hotel Plaza Tel.083-261-0410
- 7 Smile Hotel Shimonoseki Tel.083-233-0111
- 8 Green Hotel Shimonoseki Tel.083-231-1007
- 9 Ryokan Tenkai Tel.083-222-3676
- 10 Dormy INN Premium Shimonoseki Tel.083-223-5499
- 11 Tokyo INN Shimonoseki Kaikyō-yume-tower Mae Tel.083-234-1045
- 12 Yufuku Ryokan Tel.083-231-0029
- 13 Plaza Hotel Shimonoseki Tel.083-233-3333
- 14 Business Hotel VIP Nangoku Tel.083-232-0001

National Treasure, Kozanji Temple

10 mins. bus ride from Shimonoseki Sta. to Jokamachi Chofu and 10 min. walk
The Buddhist sanctuary is the oldest Zen Buddhist style architecture in Japan. A national treasure. It was built during the Kamakura Period (1302) and is a representative building of the wooden Zen Buddhist architecture. It has a significant meaning in the history of the religious architecture. The Kozanji Temple also witnessed many historical events.

Chofu Mori Residence

10 mins. bus ride from Shimonoseki Sta. to Jokamachi Chofu and 10 min. walk
It was built in 1903 by Motobuchi Mori, the feudal lord at the time. The Mori Emperor stayed here once. The imposing main building and pure Japanese style garden surrounded by white mud walls really sends people of a bygone era. It offers a tea session, and people can use it as a rest place during their stroll around Chofu. Admission fee: ¥200

Shimonoseki City Museum of History

10 mins. bus ride from Shimonoseki Sta. to Jokamachi Chofu and 10 min. walk
You can learn out about the history and culture of Shimonoseki at the museum. It houses and exhibits artifacts and documents with a focus on the Chofu Mori family and the Restoration period of the end of the Edo period. Permanent collection: Adults ¥200, students ¥100 (9:30-17:00 Last admission 16:30) Closed on Mondays (open if it is a holiday) end of the year and New Year holidays.

Boat Race Shimonoseki

10 mins. walk from Chofu Station
The public race is operated by Shimonoseki City. The speed of the boats hurtling across the water and the exhilarating sound of the motor are gripping. Even novices can enjoy the race as betting starts at ¥100.

Shimonoseki Sightseeing One-day Bus Ticket

Unlimited ride on specified routes which cover major tourist spots in Shimonoseki.
Ticket price: Adult ¥700yen Child ¥350yen
Ticket office: Shimonoseki Sta. Tourist Information Center
Shin-Shimonoseki Sta. Tourist Information Center
Shimonoseki Sta. Bus Ticket Office
Karato Bus Ticket Office

Discount Bus Ticket

Shimonoseki Sightseeing One-day Bus Ticket

Unlimited ride on specified routes which cover major tourist spots in Shimonoseki.
Ticket price: Adult ¥700yen Child ¥350yen
Ticket office: Shimonoseki Sta. Tourist Information Center
Shin-Shimonoseki Sta. Tourist Information Center
Shimonoseki Sta. Bus Ticket Office
Karato Bus Ticket Office

Kaikyō Sansaku One-day Bus Ticket

Unlimited ride available between Shimonoseki Sta. and Karato
Ticket price: Adult ¥300yen Child ¥180yen
Ticket office: Shimonoseki Sta. Bus Ticket Office
Karato Bus Ticket Office

SUNQ Pass

SUNQ Pass holders can take unlimited ride on most of the prefecture / local buses and some buses to both Kyushu and Shimonoseki within the designated period.
Ticket prices:
Northern Kyushu + Shimonoseki: 3 days, ¥8,000
All Kyushu + Shimonoseki: 3 days, ¥11,000
All Kyushu + Shimonoseki: 4 days, ¥14,000
Ticket office: Shimonoseki Sta. Bus Ticket Office
Karato Bus Ticket Office

Yamaguchi Bus Pass

Unlimited ride on local buses across Yamaguchi Prefecture
Ticket prices:
1 day, ¥2,000
2 days, ¥4,000
3 days, ¥5,000
Ticket office: Shimonoseki Sta. Bus Ticket Office